

Missouri State Beekeepers Association
P.O. Box 448 Oak Grove, MO 64075
www.mostatebeekeepers.org

December 2012

Eugene Makovec
Editor
editor@mostatebeekeepers.org

Beekeepers gather in Kansas City for Fall Conference

Taylor, Fessenden and Ross headline a busy lecture schedule

Our annual Fall Conference took place October 26-27 at the Coco Key Water Resort in Kansas City. A good number of members arrived on the evening of the 25th and enjoyed a complimentary wine and mead social hosted by **7Cs Winery** in Walnut Grove. Owner Dwight Crevelt also donated a case of his wares for our annual Queen Banquet auction.

The next two days were chock full of lectures and demonstrations on everything from monarch butterflies to the cleaning of beeswax.

Dr. Orley "Chip" Taylor gave talks on Africanized bees, swarm behavior and, perhaps most interestingly, his extensive work with monarch butterflies. Dr. Taylor founded Monarch Watch (www.monarchwatch.org) in 1992 at the University of Kansas, and it now involves over 2000 schools, nature centers and other organizations in the tracking and study of these fascinating pollinators.

Dr. Taylor offered the following observations on the status of monarch butterflies today:

- Monarch habitat has shrunk by 11 million acres in the past decade, a period in which, not coincidentally, corn and soy farmland has grown by 10 million acres.

Changes afoot at MSBA for 2013

The MSBA is undergoing a number of changes as 2012 comes to a close. Some of our executive offices are changing hands, and some are currently unfilled.

As of January 1, **John Timmons** is our new President, with **Valerie Duever** taking his previous position as Vice President. (**Bob Brammer** takes over Val's duties as Central Director.) **Ron Vivian** is retiring after 21 years as Treasurer, and **Jaime Stevens** will fill that role.

Pam Brown has stepped down as Program Chair. That office is now open, and is being revamped, with the possible appointment of a location/vendor coordinator to take over those functions so the Program Chair can concentrate on the work of scheduling and lining up speakers.

Joyce Justice has also left her position as Queen Chair. We do not have a Honey Queen for 2013, and it is hoped that a new chairperson will be found in the new future to spearhead the search for a 2014 Queen.

- Half of Mexico's monarchs have been lost in the past 10 years.
- Roundup Ready® corn and soy have "changed the landscape", since the milkweed that used to spring up within and between these crops is now wiped out by Roundup®.
- Milkweed is crucial to monarchs, as it protects the caterpillars by making them toxic to most predators.
- There is no evidence of harm to monarchs from neonicotinoids, but they are not normally exposed to this class of insecticides.
- We can help monarchs by planting milkweed on our own property.

Dr. Chip Taylor



continued on page 15

Dadant and Sons to celebrate 150th birthday with a few close friends

Bee supply house, ABJ publisher to host tri-state meeting in March

Dadant and Sons, publisher of *American Bee Journal* and the nation's largest purveyor of beekeeping equipment, will mark its sesquicentennial by hosting a tri-state meeting (Illinois, Missouri and Iowa) on March 15-16, 2013 in Hamilton, Illinois.

Attendees are invited to tour the Dadant headquarters on Friday afternoon, then attend a welcome banquet that evening. Saturday will feature beekeeping lectures by such notables as Randy Oliver, Jerry Hayes, Jim Tew and others.

The full agenda, hotel information and registration form appear on pages 10-11 of this newsletter. Early registration is recommended, as this event is expected to draw a sizable crowd.



INSIDE THIS ISSUE

From the President	2	Dadant Tri-State Meeting	10
Candy board recipe	4	Agenda and registration	
Tried-and-true winter feeding		Local associations	13
Sleep consolidates learning 5		Is there a club near you?	
- even in honeybees!		Membership application ..	14
Conference photos	6	Join online via Paypal!	
Early spring workshops	8	Directory of officers	15
St. Louis and St. Joseph areas		Several positions now open	

**From the President** by Grant Gillard

I don't like change, which is probably why I've been in the same job for the past 19 years and in the same relationship for the past 26 years. I drive my vehicles until the wheels fall off and my mechanic tells me there is nothing more he can do to keep them on the road. My truck plays CDs and I still have boxes of perfectly good cassette tapes. I hate change.

But change is inevitable. Growth only happens through change. This past summer has been a summer of transition for me. I experienced the deaths of two significant members of my immediate family. My oldest daughter got married. My youngest child left for college. Nancy changed jobs. My 12-year-old dog died. My 9-year-old cat followed suit. Nancy and I are now officially empty-nesters. It's been a summer of transition.

The MSBA is also going through a time of transition. After two years serving as your President, I am transitioning out of a job. Okay, I guess I don't hate change that much. But it is a time of transition, and growth.

We have some ideas on taking the MSBA in some new directions. We recently opened a PayPal account to take advantage of on-line registration for the Fall Conference, and about half to two-thirds of the registration was conducted via the Internet.

Thankfully, old farts like myself who are technology dinosaurs need to move out of the way and make room for those who can streamline our meetings and our communication and recreate a fresh sense of vision for the future. Change facilitates growth, so yeah, I guess I'm not so negative toward change. I guess I'm actually kind of excited!

I'm excited with the prospects of turning over the leadership to John Timmons who will take over as President. John is a gifted leader and technologically savvy. Val Duever, a fireball of energy and a visionary genius, is our new Vice President. She's already shared some ideas on making the MSBA more responsive to the local associations.

Jaime Stevens from Dexter is our new Treasurer. She replaces Ron Vivian, who for more than twenty years has faithfully filled this role and tirelessly kept us balanced ... in more ways than one! It was my privilege to bestow the Silver Skep Award to Ron at our Fall Conference in Kansas City.

We have some vacancies to fill, namely our Program Chair, formerly Pam Brown, and our Queen Chair, formerly Joyce Justice. Both Pam and Joyce have done an outstanding job and tendered their resignations earlier this year. It was also my joy to honor their work and dedication to the MSBA at our Fall Conference.

We also have an enthusiastic slate of directors. There's lots of room for you to join the MSBA through our committees, working with the Executive Board. We strongly encourage MSBA members to stay involved with their local associations, but don't hesitate to let us know your needs, to see how the MSBA can promote beekeeping as we transition into this new year. Check the website and stay informed.

**FOR SALE:****PACKAGE BEES**

**For April pickup in
Lynnville, Iowa.**

**These are 2#, 3# and 4# packages
from C.F. Koehnen and Sons.**

**Your choice of Italian or
Carniolan queens.**

**Contact Phil Ebert:
641-527-2639**

**ehoney37@netins.net
www.eberthoney.com**



**6800 North Kircher Road
Columbia MO. 65202-7652**

573-474-8837

fax 573-474-5830

walkaboutacres@centurylink..net

www.walk-aboutacres.net

**Your local dealer for
beekeeping supplies.**

***Come and see our new beekeeping
supply store with expanded
inventory.***



Dadant Winter Patties

Not sure your bees have enough stores to make it through the winter? Try these:

Dadant's winter patties are a multifunctional patty, high in carbohydrates and 3% protein to help keep your colonies strong through the winter months. Contains: sugar, MegaBee and Honey-B-Healthy

- * Can be used in winter & early spring in place of candy boards
- * Readily accepted by the bees
- * Convenient for all beekeepers
- * Currently available at Dadant Corporate Office-Hamilton, IL

51 S. 2nd St.
Hamilton, IL 62341
888-922-1293 toll-free
217-847-3324 ph.
217-847-3660 fax

1318 11th St.
Sioux City, IA 51102
877-732-3268 toll-free
712-255-3232 ph.
712-255-3233 fax

M0190040P3C 40 lb. box
\$44.95



www.dadant.com
888-922-1293





SUGAR CANDY RECIPE (BEE FEED)

by Bob Finck

MATERIALS NEEDED:

1. Feed tray (16 ¼ x 20 x 1 ½ inch rails). Cut 2 x 4 inch hole in bottom.
2. Pot, large enough to hold sugar and water. Mixture will expand while boiling. This recipe will make one candy tray.
3. Large mixing spoon.
4. Candy thermometer.
5. 15 pounds of granulated sugar (clean or dirty, bees do not care).
6. 1 to 1 ¼ quarts of water (32-40 Fluid Ounces)

DIRECTIONS:

1. Mix sugar and water thoroughly.
2. Heat mixture to 240 degrees. Do NOT stir after boiling occurs.
3. Make sure you cover holes in candy tray. I use wax paper. If you forget you will have a huge mess.
4. Let mixture cool to 190 to 195 degrees.
5. Optional – add 1 cup of dark or old honey.
6. Stir mixture until it becomes cloudy like boiled starch.
7. Pour immediately into candy tray.
8. Let cool over night.
9. This tray replaces your inner cover. Scratch paper with hive tool. Bees will eat candy in a perfect circle from the center.

ADVANTAGES:

- Cold weather feeding. Can put candy tray on a hive anytime.
- Eliminates robbing.
- Can add pollen substitute before stirring. I do not add pollen substitute.
- Candy trays can serve as your inner cover year round.
- Stores well, can make in advance and take to the bee yard as needed.
- It is a “slower” feed so it will not promote swarming as much if used in the late spring.

DISADVANTAGE:

- Equipment needed for making candy and candy tray.

Candy trays have several other uses: Inner cover, reverse tray while re-queening, applying Api-Guard, and use to cover Para Moth while storing supers.

Editor's note: Bob Finck gave a presentation on this winter feeding method to Three Rivers Beekeepers in November. Candy trays are a good way to feed bees in the winter months, when liquid feed may be too cold to take, would add unwanted moisture in the hive and could stimulate off-season brood rearing. Bob said he adapted this recipe from others given to him years ago, and has made “literally hundreds” of these trays over the years.



Honeybees consolidate navigation memory during sleep

Journal of Experimental Biology

Research Article, Lisa Beyaert, Uwe Greggers and Randolph Menzel* Institut für Biologie, Freie Universität Berlin, 14195 Berlin, Germany *Author for correspondence (menzel@neurobiologie.fu-berlin.de). The Journal of Experimental Biology 215, 3981-3988 © 2012. Published by The Company of Biologists Ltd., doi:10.1242/jeb.075499

Summary: Sleep is known to support memory consolidation in animals, including humans. Here we ask whether consolidation of novel navigation memory in honeybees depends on sleep. Foragers were exposed to a forced navigation task in which they learned to home more efficiently from an unexpected release site by acquiring navigational memory during the successful homing flight.

This task was quantified using harmonic radar tracking and applied to bees that were equipped with a radio frequency identification device (RFID). The RFID was used to record their outbound and inbound flights and continuously monitor their behavior inside the colony, including their rest during the day and sleep at night. Bees marked with the RFID behaved normally inside and outside the hive. Bees slept longer during the night following forced navigation tasks, but foraging flights of different lengths did not lead to different rest times during the day or total sleep time during the night. Sleep deprivation before the forced navigation task did not alter learning and memory acquired during the task. However, sleep deprivation during the night after forced navigation learning reduced the probability of returning successfully to the hive from the same release site. It is concluded that consolidation of novel navigation memory is facilitated by night sleep in bees.

Something to open besides your hives.

What to get the beekeeper in your life:

(Even if that's you.)

- ~ Protective Clothing
- ~ Beekeeping Literature
- ~ Spring Bees
- ~ Gift Certificates

Walter T. Kelley Co.

Serving the Beekeeper Since 1924.
kelleybees.com 800.233.2899
PO Box 240 807 W. Main Street Clarkson, KY 42726



DRAPER'S SUPER BEE

Specializing in:
Bee Pollen
Beekeeping Supplies
Containers
(402) 274-3725

Heartland Honey and Beekeeping Supplies

19201 South Clare Road
Spring Hill, KS 66061
913-856-8356

www.heartlandhoney.com

THE HAWLEY HONEY COMPANY

220 North Elm Iola, KS 66749
620-365-5956 (After 8 pm 620-365-7919)

White clover honey strained in 5-gallon buckets. We will pack it in your jars for an extra fee.

Bee Equipment - New and Used - Used Extractors
Corn syrup, sugar syrup and SUGAR

Bees -- Frames of brood

Call for prices.

Can deliver to Kansas City, Joplin or Butler, MO

WEAVER'S FAMOUS QUEENS

And Package Bees

Buckfast & All-American

BEEKEEPING SUPPLIES AND BEGINNER'S KITS

THE R WEAVER APIARIES, INC.

16495 C.R. 319, NAVASOTA, TX 77868

Phone (936) 825-2333 FAX (936) 825-3642

EMAIL: rweaver@rweaver.com

WEBSITE: www.rweaver.com



Clockwise from bottom right: **Valerie Duever** displays her farmers' market setup for "Marketing Honey and Hive Products", one of several breakout workshops at the Fall Conference. Other sessions included **James Zitting**, "Top Bar Beekeeping"; **Bob Owen**, "Feral Bee Trap Outs"; **Jim Fisher**, "Cleaning Beeswax"; **Bernie Andrews**, "Comb Honey"; and **Jann Amos**, "Making Splits".

Facing page, center: **Yvonne Von Der Ahe**, "Making Lotion Bars, Lip Balms and Salves". Then, clockwise from middle left: **Gary Ross**, "Preparing Honey for Competition"; **Cory Stevens**, "Utilizing Cells and Mating Cells"; Queen Chair **Joyce Justice** and Honey Queen **Megan Allen** exchange gifts at the end of their respective terms; one of our banquet waiters gets into the spirit; **Collin Wamsley**, State Entomologist, "Why and How to Send Samples to the National Bee Lab"; Megan displays an umbrella in the Queen Auction; and finally, **Ron Vivian**, left, is presented with the Silver Skep Award from President **Grant Gillard** for 21 years of service as Treasurer.

All photos by Eugene Makovec





GREAT PLAINS GROWERS CONFERENCE

www.greatplainsgrowers.org
St. Joseph, Missouri

On Thursday choose between ONE of SIX workshops: High Tunnel, Soil & Irrigation, Fruit Workshop, Honey Bees, Intro to Vegetable Production (Spanish) and Farm to School!

January 10, 2013

Honey Bees

Spratt Classroom 201

In this year's workshop, we are addressing advanced beekeeping topics. Come prepared to learn, discuss, and ask questions. The advanced workshop will be of interest to all, no matter what your level of expertise. A short basic beekeeping session will also be offered on Friday for those who are new to beekeeping.

8:00 Registration

8:45 Welcome, Introductions and Program Overview

9:00 Varroa Mites – Charlie Simonds

- Varroa mites are external parasites that can cause extensive damage to honey bee colonies. This presentation examines the kind of damage they cause to colonies, how they reproduce, and methods of control.

9:45 Pollination Requirements – Jeremy Wagnitz

- Many crops require pollination to produce fruit, and beekeepers can earn additional income by renting hives. This presentation will look at the estimated amounts of pollinators required for different crops, and how to grade honey bee colonies for pollination contracts.

10:30 Break

11:00 Pesticides and Honey Bees – Sharon Dobesh

- Insecticides are toxic to bees, but some may be more “bee friendly” than others. If a beekeeper is able to influence the choice of an insecticide, which one should he suggest? Miticides, herbicides, and fungicides will also be explored. The Project Good Neighbor program in Kansas will also be described.

11:45 Anatomy of the Honey Bee – Charlie Simonds

- As a beekeeper, honey bee biology is important to know. This presentation will study the external and internal parts of a honey bee, and their function.

12:30 Lunch

1:30 Introduction to Queen Rearing – Jeremy Wagnitz

- Throughout the life cycle of a bee colony, it sometimes becomes necessary to replace a queen. This presentation offers a brief discussion of methods and equipment required to rear queens in a small beekeeping operation.

2:15 Update on Colony Collapse Disorder – Sharon Dobesh

- This presentation will discuss some of the background and up through the most current information about Colony Collapse Disorder (CCD) of honey bees. The talk will cover government policies created, diseases found, and how CCD has affected beekeeping in general.

3:00 Break

3:30 Bees and Drought – Group Discussion led by Raymond Heldenbrand

- The drought of 2012 has impacted all aspects of agriculture, and beekeepers have had to deal with the harsh conditions as well. Many have lost colonies, and almost all have experienced reduced honey production. This session is designed to be a group discussion. Come prepared to share your experience's and solutions in dealing with the drought in the bee yard this year.

4:15 Wrap-up and Evaluation

- In addition to knowing how much you got from this workshop, we are interested in what topics you would be interested in for future meetings. Please take this opportunity to make suggestions, and fill out our survey.

4:30 Workshop Adjourn

HONEY BEES WORKSHOP INSTRUCTORS/FACILITATORS:

Charlie Simonds worked as the Apiary Inspector for the State of Nebraska for 17 years. He also worked with his brother-in-law in an operation operating 1240 colonies of bees. He also owned and managed Honey Bee World, a beekeeping supply business for 22 years. Finally, he has taught Beekeeping for Beginners at Southeast Community College, in Lincoln, NE.

Jeremy Wagnitz received a B.S. in Horticulture from the University of Nebraska-Lincoln in 2007 and a M.S. in Entomology specializing in Apiculture in 2009. After graduation, he moved to Baton Rouge, LA, to work at the USDA Honey Bee Genetics and Physiology Lab. While in Baton Rouge, he was head of the Russian Honey Bee Breeding program. In 2011, Jeremy returned to Nebraska to start the Doctor of Plant health program. He will be graduating with his doctoral degree in the Spring of 2014.

Sharon Dobesh has an M.S. in Entomology. From 1995-2002 she was a Plant Protection Specialist for the Missouri Department of Agriculture, conducting nursery, greenhouse, sod farm and export inspections. In 2002 she joined the faculty at Kansas State University Entomology Department as the Pesticide & IPM Coordinator conducting pesticide recertification programs, IPM in schools programs, and giving presentations on wood-destroying insects and honey bees as an extension specialist. Currently she is the Associate Director of the Great Plains Diagnostic Network and National Plant Diagnostic Network Exercise committee chair working with USDA-APHIS-PPQ.

Raymond Heldenbrand has been keeping bees for over 17 years, and brings a wealth of practical beekeeping skills and ideas to the conference. A resident of Daviess County, Missouri, he is well-known by local residents for his enthusiasm to help new beekeepers, and willingness to capture swarms and deal with nuisance bee colonies when homeowners call. He is also a Master Gardener and serves on the Daviess County Extension Council. Raymond is retired from General Motors, and the U.S. Army Reserves, where he attained the rank of Command Sergeant Major.



Eastern, Three Rivers clubs announce spring workshops

Eastern will also host second annual regional Mardi Gras Banquet

The **Eastern Missouri Beekeepers Association** (EMBA) will offer courses of instruction for beginners and experienced beekeepers on Saturday, February 9, 2013, at Maritz in Fenton, Missouri. Space is limited, and will be filled on a first-come-first-served basis.

Additionally, the Second Annual **St. Louis Beekeepers Mardi Gras Banquet** will be held the evening before the workshop on Friday, February 8, 2013 at Maritz.

Prominent scientists Jamie Ellis, Jerry Hayes, Heather Mattila, and Juliana Rangel will be among the instructors leading the workshop.

Jamie Ellis is Assistant Professor of Entomology at the University of Florida. Dr. Ellis is considered one of the country's preeminent extension and research entomologists. He is a masterful teacher, and a favorite among beekeepers.

Gerald (Jerry) W. Hayes Jr., Ph.D., is a well-known author and lecturer in American beekeeping. Jerry's popular column, "The Classroom," appears monthly in *American Bee Journal*. He is the Beeologics Commercial Lead at Monsanto, contributing his decades of experience to the company's efforts to protect honey bees from pathogens through non-chemical controls. He is a founding member of the Colony Collapse Disorder Working Group, and a science advisor to Project Apis Mellifera.

Heather Rose Matilla is the Knafel Assistant Professor in the Natural Sciences, Department of Biological Sciences, Wellesley College, Wellesley, Massachusetts. Dr. Matilla is a leading environmental biologist, recognized for her teaching and prolific research on honey bee biology and behavior, including genetic diversity, nutrition, hive communication, foraging, and swarming.

Juliana Rangel is Assistant Professor in Apiculture, Department of Entomology, Texas A&M University, College Station, Texas. Dr. Rangel teaches the behavior of honey bee queens, interested in biology ecology. She throughout States as a guest lecturer and presenter at beekeeping meetings and professional conferences.

The Experienced Beekeepers' course will be tailored towards intermediate and expert level beekeepers, and will place special emphasis on biology, queen rearing, swarming, and colony behavior.

The Beginners Beekeeping course is intended for persons with no prior beekeeping experience. The class will cover all aspects of basic beekeeping to prepare students to start beekeeping in 2013.

Tuition for the workshop is \$75 per person, including lunch and refreshments, before January 20, 2013. Tuition is \$90 per person for those registering on or after January 20th. Registration closes February 2nd unless filled sooner. There will be a waiting list, if needed.

The second annual EMBA St. Louis Regional Beekeepers Mardi Gras Banquet on Friday, February 8th, features New Orleans style food and music, a cash bar, door prizes including nucs, queens and beekeeping equipment, and a keynote speaker. The cost of the

banquet is in addition to the workshop. For more information, visit www.easternmobeekeepers.com

Three Rivers Beekeepers and the University of Missouri Extension Center for St. Charles County are offering a Beginning Beekeeper Class on February 1st and 2nd (Friday 6:00 p.m. to 9:30 p.m. and Saturday 9:00 a.m. to 6:00 p.m.). Come learn about the fascinating honeybee and how to manage them and their home, the beehive.

In two class sessions, you'll learn from experienced beekeepers, videos, written material, and hands-on demonstrations. You'll receive full instructions on the kinds of equipment you need, where to get it and where to get your bees. You'll also be invited to join Three Rivers Beekeepers for continuing education and mentoring.

The classes will cover the following topics: Honeybee Biology, Basics of the Hive, Basic Beekeeping Equipment, Purchasing and Assembling Hive Equipment, Obtaining and Installing Honeybees, Inspecting and Managing the Hives, Solving Common Beekeeping Problems, and Preparing Your Hives for Honey Collection.

Cost for the program is \$75.00 per person. Register online at www.ThreeRiversBeekeepers.com, or call the Extension Center at 636-970-3000.

Got a spring workshop?

Send us the details, and we'll include you in February's newsletter.

editor@mostatebeekeepers.org

studies and reproductive of honey bee and is broadly in honey bee and behavioral is in demand the United



www.7cswinery.com

dwright@7cswinery.com

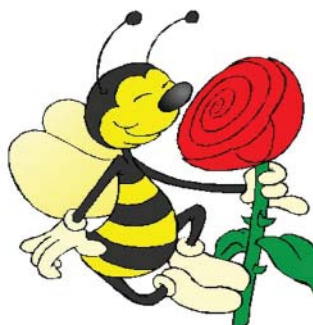
417-788-2263

502 E 560th Road

Walnut Grove MO 65770

www.facebook.com/7cswinery

**Open Year Round
Wines and Meads
Check Website For Events**



**We Want to Buy
Varietal Honey
2-3 Buckets or more
Per Variety**

Dadant

150th Anniversary Celebration

Location
Sullivan Auction site
1066 E, Hwy 136, Hamilton, IL
March 15th & 16th, 2013



TENTATIVE AGENDA

Friday, March 15th, 2013

12:00-4:00 p.m. Open House at Dadant & Sons, Inc. manufacturing locations: Hamilton, IL, Dallas City, IL, Kahoka, MO.

5:30 p.m. Welcome & Banquet Dinner at Sullivan Auction Site, Hamilton, IL.

6:30 p.m. After Dinner speaker: Dr. James Tew, *Bee Culture* Columnist, Author, Beekeeping Extension Specialist - Wooster, OH.

7:30 p.m. Close

Saturday, March 16th, 2013

8:00 a.m. Registration - Sullivan Auction Site- Hamilton, IL.

8:45 a.m. Coffee and Rolls

9:00 a.m. Welcome by Tim C Dadant, President, Dadant & Sons, Inc.

9:15 a.m. Randy Oliver - *ABJ* Columnist, Commercial Beekeeper and Bee Researcher - Grass Valley, CA.

10:05 a.m. Break

10:30 a.m. Dr. James Tew - *Bee Culture* Columnist, Author, Beekeeping Extension Specialist - Wooster, OH.

11:20 a.m. Jerry Hayes - *ABJ* Columnist, Bee Research at Monsanto - St. Louis, MO.

12:10 p.m. Lunch Break

1:30 p.m. Randy Oliver - *ABJ* Columnist, Commercial Beekeeper and Bee Researcher - Grass Valley, CA

*All 3 Sessions (A, B, C) will be running in all 3 time slots

A: Setting up a Honey House - Kent Robertson, Manager of Dallas City, IL. metal Plant

B: Honey & Hive Product Marketing - Charles and Karen Lorence - Aurora, IL.

C: Queen Rearing and Making Spring Splits - Ray Latner - High Springs, FL. Branch manager, Beekeeper

2:15 p.m. Sessions: A, B, C

2:45 p.m. Sessions: A, B, C

3:15 p.m. Sessions: A, B, C

3:50 p.m. Raffle drawing

4:00 p.m. Close

*If session exceeds room capacity, attendees will be moved to another session.

KEYNOTE SPEAKERS

Randy Oliver He has 40 years of practical beekeeping experience, plus holds B.S. and M.S. degrees in Biological Sciences. Randy researches, analyzes, and digests beekeeping information from all over the world in order to not only broaden his own depth of understanding and knowledge, but to develop practical solutions to many of today's beekeeping problems, which he then shares with other beekeepers through his various articles in the *American Bee Journal*, his speaking engagements worldwide, and on his website: www.ScientificBeekeeping.com

Dr. James Tew He is currently the Beekeeping Specialist for the Alabama Cooperative Extension Service, Auburn University. In 2011 he retired after 34 years as the Ohio State Extension Beekeeping Specialist at Ohio State Univ. He has taught and has conducted applied research on honey bees and their behavior, specifically pollination behavior. He writes monthly articles for *Bee Culture* and has written two books, *Beekeeping Principles* and *Backyard Beekeeping*. He enjoys woodworking, photography and feeding ungrateful birds. He can be reached at: tewbee2@gmail.com, twitter.com/onetewbee and facebook.com/tewbee2.

Jerry Hayes Jerry Hayes took an Apiculture Program under Dr. Jim Tew at the Univ. of Ohio. Then went to work at the USDA Bee Breeding and Stock Lab in Baton Rouge where at the time African Honey Bees were on the horizon and ID techniques were being studied. He later became a Regional Dadant Branch manager in Michigan and eventually moved to Dadant's Headquarters in

Hamilton, Illinois. In 2003, he moved to Florida to become the Chief of the Apiary Inspection Section. He has written, with many writers' help, the "Classroom" in the *ABJ* for 20 plus years. He is on several science advisory boards for Colony Collapse Disorder and research funding projects. Starting in late January of 2012, he began a new beekeeping disease research job at Monsanto Corporation headquartered in St. Louis, MO.

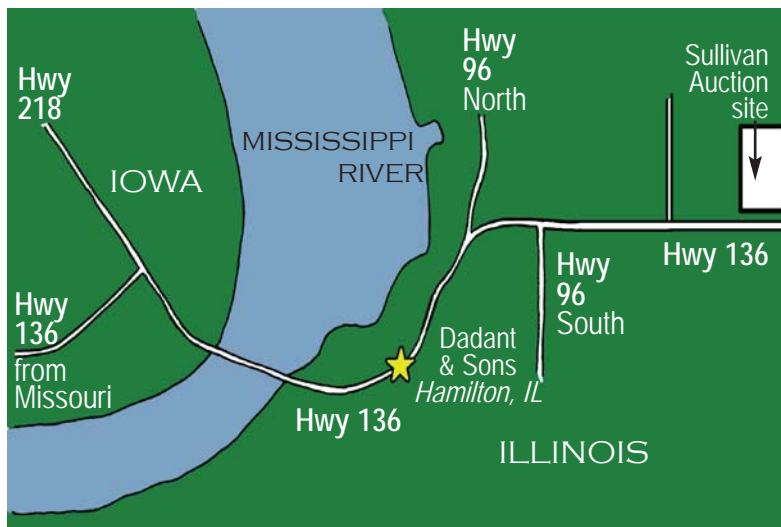
SPECIAL EVENTS

Friday afternoon conference attendees will have an opportunity to tour the facilities of Dadant and Sons in Hamilton, IL. Tours will include visits to the company's office, showroom, library and warehouse. In addition, guided tours will allow visitors to see the production of wax foundation. Tours also available at our Kahoka, MO. candle plant and the Dallas City, IL. metal plant.

Also on Friday evening, at the Sullivan Auction site, there will be a kick-off banquet dinner for meeting registrants who have pre-registered. Following the banquet dinner, all meeting pre-registrants will have an opportunity to hear Dr. James Tew. In order to participate in the Friday evening banquet, participants need to pre-register. See the registration form for details.

On Saturday, in addition to hearing three nationally recognized keynote speakers, attendees will have an opportunity to participate in all three break-out sessions that will address beekeeper needs and interests. A Saturday luncheon, provided free of charge by Dadant & Sons, will be available to all meeting pre-registrants.

There will be a raffle for door prizes at the meeting.



ACCOMMODATIONS

Hotel rooms are available in Keokuk and outlying areas. Ask for Dadant rate when making reservations.

Baymont Inn
4th & Main St., Keokuk, IA
319-524-8000

80 rooms, downtown opposite River City Mall shopping, exercise facility with whirlpool & sauna, indoor heated pool, free local calls and free continental breakfast. King whirlpool suites, non-smoking and handicap rooms available. Pets allowed, rv/truck parking, elevators, game room, Major credit cards accepted.

Super 8 Motel
3511 Main St., Keokuk, IA
319-524-3888
www.super8.com

Restaurants nearby, fitness facility, cable TV, HBO, complimentary continental breakfast, laundry facility, wireless access available in public areas. Check-in time 1:00 p.m. major credit cards accepted.

Fairfield Inn
3404 Main St., Keokuk, IA
319-524-9000
www.marriott.com

61 rooms, 3 floors, indoor swimming pool, whirlpool, 4 honeymoon suites with jacuzzi & micro fridge. Free continental breakfast, 24-hour coffee & tea, free local calls, smoke-free policy, cable with free HBO, high-speed internet, check-in time 3:00 p.m., major credit cards accepted.

Hampton Inn
3201 Main St., Keokuk, IA
319-524-6700
www.hamptoninn.hilton.com

63 guest rooms including accessible rooms. Complimentary beverage area and free hot breakfast, fitness room, indoor heated pool, safety deposit box, business center, elevators, high chairs and play pens. Free internet access. Service animals allowed, sorry no pets. Smoking rooms available.

SESSION PRESENTERS

CHARLES and KAREN LORENCE - ABJ Columnist
Honey & Hive Product Marketing

RAY LATNER - Dadant-High Springs, FL - branch manager, beekeeper
Queen Rearing and Making Spring Splits

KENT ROBERTSON Dadant-Dallas City, IL - metal plant manager
Setting Up a Honey House

ADDITIONAL ACCOMMODATIONS ARE AVAILABLE IN SURROUNDING COMMUNITIES

Carthage, IL	11 miles	25 rooms	www.prairiewindsmotel.com
Nauvoo, IL	13 miles	290 rooms	www.beautifulnauvoo.com/stay_hotels.html
Quincy, IL	36 miles	733 rooms	www.seequincy.com/SeeOurAreaAdamsHotel.php
Macomb, IL	38 miles	300 rooms	http://www.macombs.com/lodging.html
Kahoka, MO	24 miles	17 rooms	www.welcomeinnkahoka.com
Keokuk, IA	3 miles	300 rooms	www.keokukiowatourism.org/lodging.htm
Ft. Madison, IA	20 miles	174 rooms	www.fortmadison.com/visit-us/lodging/hotelsmotels/
Burlington, IA	38 miles	692 rooms	www.growburlington.com/visit_stay.cfm

REGISTRATION PROCEDURES

Pre-registration will allow your hosts to make adequate preparations for meals. Only those who pre-register by the deadline date of Feb.15, 2013 will be eligible to attend the free Friday evening banquet dinner and the Saturday luncheon. Etc.

Registration will be limited

Dadant 150th Anniversary Celebration Pre-registration Form

One household per pre-registration form only, please. If you need additional preregistration forms, you may either photocopy this page, or contact Dadant and Sons by phone or e-mail to request that additional copies be sent to you. Be certain to give your mailing address when requesting additional preregistration forms.

Name(s): _____

Postal Address: _____

City, State ZIP: _____

Phone No. _____

E-mail: _____

Registration: _____ Friday evening banquet

Registration: _____ Saturday luncheon

Complete and return by Feb.15th to Dadant & Sons, Inc., 51 S. 2nd Street, Hamilton, IL 62341-1397.



Femme Osage Apiaries

Ian & Pamela Brown
Certified Master Beekeepers

1407 Sneak Road

Foristell, MO 63348

636-398-5014

Pollination Service

Bees - Honey - Pollen

Wax - Supplies



Bee Culture

THE MAGAZINE OF AMERICAN BEEKEEPING

Here's what you'll get

- Honey bees • Beekeeping • Beekeepers •
- Honey • Propolis • Bee Equipment •
- Beeswax • Current Research •
- Beginning Beekeeping How-To •
- Sideline Beekeeping • New Products •
- Honey Recipes • Book Reviews •
- Market Reports • More • More • More • More!

Skip the secretary • Call Today

Tell Us What Club You're In -

Get The Discount

**GET YOUR
BEE CLUB DISCOUNT**
\$20/1 year
\$38/2 years

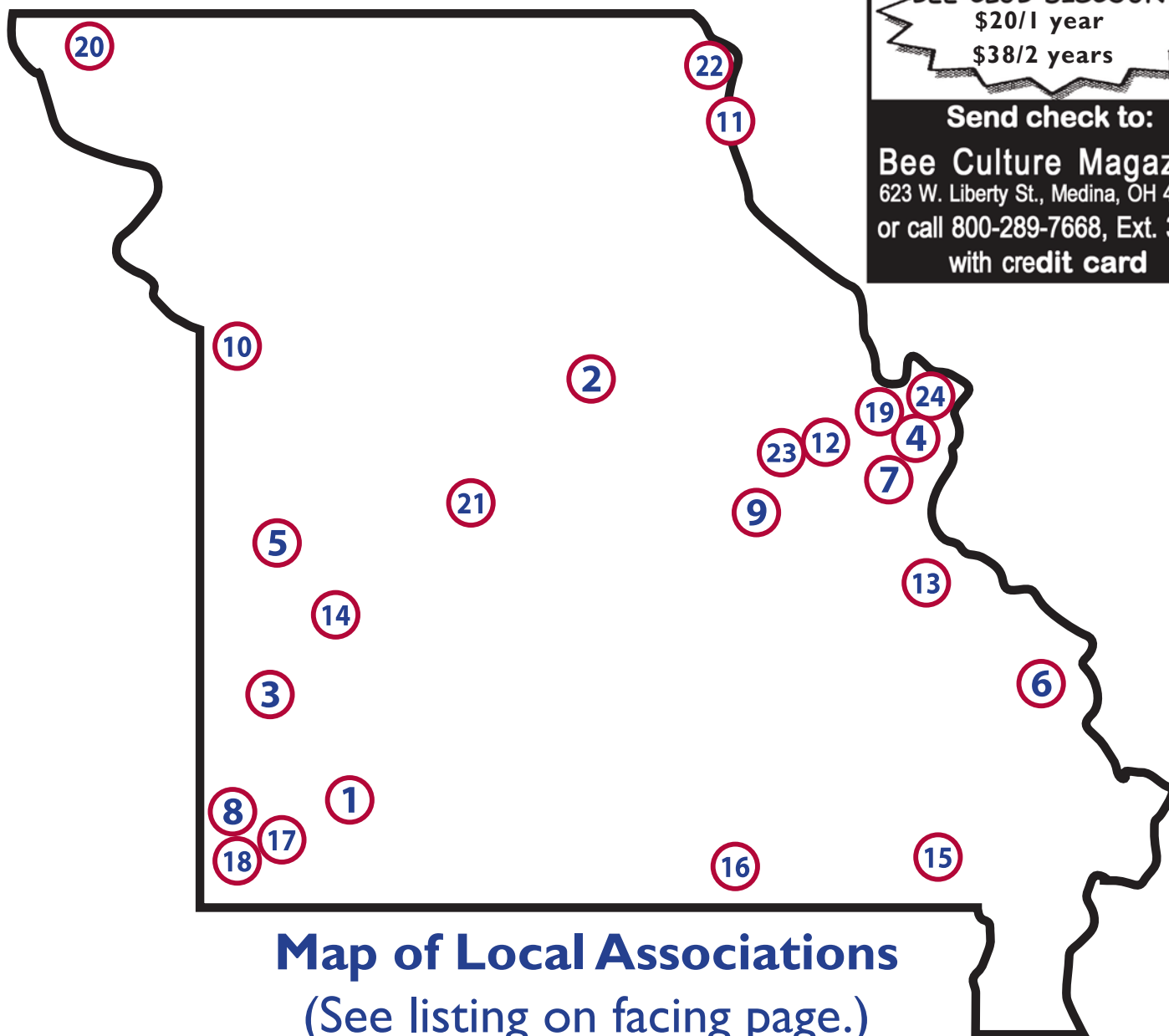
Send check to:

Bee Culture Magazine

623 W. Liberty St., Medina, OH 44256

or call 800-289-7668, Ext. 3220

with credit card



Map of Local Associations
(See listing on facing page.)



Local Beekeepers Associations

1 Beekeepers Association of the Ozarks

4th Tuesday of each month, 7:00 p.m.
Darr Ag Center, 2401 S. Kansas Expwy, Springfield
www.ozarksbeekeepers.org

2 Boone Regional Beekeepers Association

3rd Sunday of month, 3:00 p.m., Columbia Insurance Group, 2102 Whitegate Dr. (back door), Columbia
President Jim Duever 573-254-3373
www.boonebees.org

3 Busy Bee Club

4th Tuesday of each month, 7:00 p.m., Cedar County Health Center, Owens Mill Road, Stockton
Neal Lee 417-276-3090, Neil Brunner 314-276-4252
grnthumb@alltel.net

4 Eastern Missouri Beekeepers Association

2nd Wednesday of each month, 7:00 p.m., location changes. Bob Sears, President 314-479-9517
www.easternmobeekeepers.com

5 Golden Valley Beekeepers

2nd Monday of each month, 7:00 p.m. (but varies)
Henry County Courthouse, Clinton MO
Contact Kathy Murphy 660-678-5171
murftk@copper.net

6 Jackson Area Beekeepers

4th Tuesday of each month, 7:00 p.m.
First Pres. of Jackson, 206 E. Washington
Contact Grant Gillard 573-243-6568
gillard5@charter.net

7 Jefferson County Beekeepers Association

2nd Tuesday of each month, 7:30 p.m., Hwy B & 21
Jefferson County Extension Center, Hillsboro
Contact Scott Moser 636-285-7295

8 Joplin Area Beekeepers Association

Last Tue. of each month, 7 pm, SM Bank Community Building (7th and Duquesne Rd), Joplin
Steve Davis, President 620-202-0232

9 Mid Missouri Beekeepers

3rd Sunday of each month, 2 pm, Old Train Depot, St. James. Steven Todd, President 573-885-6650
steventdd447@gmail.com

10 Midwestern Beekeepers Association

Nov-March, 2nd Sunday of each month, 2:30 p.m.
April-Oct, 2nd Thursday of each month, 7:00 p.m. (Schedule varies; please call first to confirm.)
Bass Pro Shop, Independence, Conservation Room
Andy Nowachek, President 913-438-5397

11 Mississippi Valley Beekeepers Association

Last Tuesday of Month in Quincy, IL
Contact Bernie Andrew 217-938-4975

12 Missouri Valley Beekeepers Association

3rd Monday of each month, 7:00 p.m.
Location varies, contact below if unsure
President Calvin Brandt cvbrandt@landolakes.com

13 Parkland Beekeepers

3rd Tuesday of month, 7pm, Ozark Federal Savings
President Jim Johnson 573-330-6498 or 573-330-6499

14 Pomme de Terre Beekeepers

2nd Thursday of each month, 7 pm
Missouri Extension Office, Hermitage
Contact Bessi Shryer 417-745-2527

15 SEMO Honey Producers

2nd Thursday of month, Church of Christ, Poplar Bluff
Contact Ernie Wells 573-429-0222
wells.ernie@gmail.com

16 South Central Missouri Beekeepers Association

1st Friday of month, Howell Electric Coop, West Plains
Monty Wiens, President 417 257-3994

17 Southern MO Beekeepers of Monett "MOBees"

3rd Tuesday of each month, 7:00 p.m.
United Methodist Church, Hwy 37 NW of Monett
Leon Riggs, President 417-235-5053

18 Southwest Missouri Beekeepers Assn. of Neosho

1st Tuesday of month, Neosho High School FFA Bldg
President Roger Ross 417-472-3504

19 Three Rivers Beekeepers

3rd Monday of month, University of Missouri Extension, 260 Brown Road, St. Peters, Missouri, 7:00 p.m.
For info: 2952 Greenleaf Drive, St. Charles, MO 63303
info@threeriversbeekeepers.com

20 Northwest Missouri Bee Busters

1st Monday of odd months, 7:00 p.m.
511 4th Street, Conception Junction, MO 64434
Gerald Auffert, President 660-944-2535

21 Lake of the Ozarks Beekeepers

3rd Saturday of month, 1:00 p.m.
UMC Extension Office, 100 E. Newton, Versailles MO
Contact Russell Kasnick 573-372-3122

22 Northeast Missouri Beekeepers Association

1st Friday of month, 6:30 pm Running Fox Elementary (3 miles south of Wayland) Acting President
Randy Ewart 573-248-5561 rewart@centurytel.net

23 Gasconade Region Bee Keepers

2nd Tuesday 7:00, First State Comm. Bank, Owensville
President Rodney Angell 573-259-5811
2224 Nowack, Rosebud MO bee143@fidnet.com

24 St. Louis Beekeepers

4th Tuesday 6:30, Schlafly Bottleworks
contact@saintlouisbeekeepers.com
www.saintlouisbeekeepers.com

See state map on facing page for approximate geographic locations.

**MSBA Membership Application**

Name _____ Spouse's Name _____
My local association is _____
Address _____
City/State/Zip _____
Phone Number _____ Email _____

New!

Join or renew at
www.mostatebeekeepers.org
and use your credit card
or PayPal!

NOTE: If you belong to a local association, please pay your state dues through your local club.

State Association Dues (Check only one box)

Adult Membership \$15.00 ☐ Amount Enclosed \$ _____
Family Membership \$20.00 ☐ Make check payable to: Missouri State Beekeepers Association
Student Membership \$5.00 ☐ Mail to: P.O. Box 448 Oak Grove, MO 64075

Magazine Discounts: Discounts are available for MSBA members to two beekeeping magazines. You may use their order forms and mail them yourself to the publishers as shown below:

AMERICAN BEE JOURNAL		ASSOCIATION MEMBER SUBSCRIPTION		SAVE 25%	
Association _____		Secretary's Name _____			
Subscriber's Name _____		Address _____			
Address _____		City _____			
City _____		State, Zip _____			
State, Zip _____		Phone # _____			
Comments _____					
<input type="checkbox"/> NEW	<input type="checkbox"/> RENEWAL	U.S.	<input type="checkbox"/> 1 Yr. - \$20.25	<input type="checkbox"/> 2 Yrs. - \$38.25	<input type="checkbox"/> 3 Yrs. - \$54.00
(PRICES GOOD THROUGH DEC. 31, 2012)		Canada	<input type="checkbox"/> 1 Yr. - \$34.25	<input type="checkbox"/> 2 Yrs. - \$66.25	<input type="checkbox"/> 3 Yrs. - \$97.00
Return to: American Bee Journal		Foreign	<input type="checkbox"/> 1 Yr. - \$43.25	<input type="checkbox"/> 2 Yrs. - \$83.25	<input type="checkbox"/> 3 Yrs. - \$120.00
51 S. 2nd St., Hamilton, IL 62341					

ROOT PUBLICATIONS		ASSOCIATION MEMBER SUBSCRIPTION		<i>Bee Culture Magazine</i>
Please Print Clearly				
Association _____		Secretary's Name _____		
Subscriber's Name _____		Address _____		
Address _____		City _____		
City _____		State, Zip _____		
State, Zip _____		Comments _____		
Phone # _____				
<input type="checkbox"/> NEW	<input type="checkbox"/> RENEWAL	<input type="checkbox"/> 1 Yr. - \$20.00	<input type="checkbox"/> 2 Yr. - \$38.00	
				For Office Use Only
				Acct. # _____
				Canada - add \$15.00 per year
				All other foreign add \$20/year
Return white copy to: Bee Culture, Subscription Dept., P.O. Box 706, Medina, OH 44258				
Please discard any other forms. Use only this form. Prices subject to change without notice.				



Fall conference wrap-up

continued from page 1

- If we mow milkweed areas, it is best to do so around July 1st, as the new plants that spring up afterward will be available and attractive to butterflies.
- Monarch Watch is working with parks and roads departments to encourage once-a-year mowing rather than the more common practice of three times a year. This serves to preserve pollinators along with saving money for these agencies.

Gary Ross, an experienced honey judge for the Missouri State Fair and other venues, gave a valuable off-season talk on preparing products for state fair entries. His tips included the following:

- Comb honey cannot contain any granulation, so avoid fast-granulating varieties like canola.
- Creamed honey should not be so soft as to get runny, nor too hard to spread. (If it breaks the judge's toothpick, it's too hard.)
- Cool beeswax slowly so as to avoid cracking, then store in a closed container to keep from absorbing odors.
- Observation hives should contain some drones, too.

Ron Fessenden, MD, author of *The Honey Revolution: Restoring the Health of Future Generations*, spoke about the importance of honey in the human diet. Honey, he said, offers tremendous benefits in the areas of sleep, liver function and weight loss. Honey regulates blood sugar via glycogen formation in the liver. A tablespoon of honey before bedtime feeds the liver, which in turn gives nourishment to the brain and improves sleep.

A variety of speakers also gave breakout workshops. Many of them can be seen in the photo spread on pages 6-7.



President Grant Gillard presents outgoing Program Chair Pam Brown with a gift in appreciation for her service. Among the new meeting features introduced by Pam are the Hospitality Room, cooking and craft contests, the Wine Social and Queen Reception, and your editor's favorite, commemorative pins for meeting locations.

Directory of Officers

President: John Timmons 636-940-8202
2952 Greenleaf Drive, St. Charles MO 6330
president@mostatebeekeepers.org

Vice President: Valerie Duever 314-402-4841
2362 County Road 185, Auxvasse MO 65231
vicepresident@mostatebeekeepers.org

Secretary: Steve Moeller 573-886-0662
7035 N. Kircher Rd., Columbia MO 65202
secretary@mostatebeekeepers.org

Treasurer: Jaime Stevens 573-225-6935
PO Box 214, Dexter MO 63841
treasurer@mostatebeekeepers.org

Past-President: Grant Gillard 573 243-6568
3721 North High Street, Jackson MO 63755
pastpresident@mostatebeekeepers.org

Northwestern Director: Open
northwestdir@mostatebeekeepers.org

Northeastern Director: Steve Harris 314-805-6451
1224 Sherbrooke Road, St. Charles MO 63303
northeastdir@mostatebeekeepers.org

Southeastern Director: Cory Stevens 573-225-6935
PO Box 214, Dexter MO 63841
southeastdir@mostatebeekeepers.org

Southwestern Director: Gary Dowling 620-724-3189
507 N. Ozark St., Girard KS 66743
southwestdir@mostatebeekeepers.org

Central Director: Bob Brammer 660-385-2840
31649 Lake St., Macon MO 63552
centraldir@mostatebeekeepers.org

Program Chairperson: Open
program@mostatebeekeepers.org

Newsletter Editor: Eugene Makovec 314-703-7650
135 Alex Dr., Foley MO 63347
editor@mostatebeekeepers.org

Auxiliary Treasurer: Dolores Vivian 816-690-7516
443 Fricke Road, Bates City MO 64011-8280
auxiliary@mostatebeekeepers.org

Queen Chairperson: Open
queenchair@mostatebeekeepers.org

State Fair Chairman: Dean Sanders 816-456-4683 cell
37804 Old Pink Hill Road, Oak Grove MO 64075

State Entomologist: Collin Wamsley 573-751-5505
collin.wamsley@mda.mo.gov

Associate Professor of Entomology: Richard Houseman
HousemanR@missouri.edu 573-882-7181
1-87 Agricultural Building, University of Missouri-
Columbia, Columbia MO 65211



Missouri State Beekeepers Association

P.O. Box 448 Oak Grove, MO 64075

www.mostatebeekeepers.org



A taste of excellence: Winners of the Fall Conference cooking and baking contests are, from left to right: Anthony Axton, Cindy Suddarth, Cathy Misko, Nancy Giofre, Dominic Giofre, Yvonne Von Der Ahe and Dolores Vivian.

RENEW NOW:

Don't forget -- if you have not already done so, please renew your membership for 2013, either via the form on page 14 or on our website.

This newsletter is published six times per year, in even months. Submissions are due by the 15th of the month prior to publication.

The email edition is in color, and contains hyperlinks and bonus back-page material, while the print version is in black-and-white. If you are a member currently receiving the printed newsletter and you wish to upgrade, just send an email to editor@mostatebeekeepers.org with "email newsletter" in the subject line. I'll reply with confirmation, and add you to my list.

Advertising rates are as follows:	Business card size	\$15.00	Half page	\$50.00
	Quarter page	\$35.00	Full page	\$100.00

Classified Ads: Advertise one to three beekeeping-related items in a one-line ad at no charge. This service is for non-commercial MSBA members only, and is limited to one ad per item per calendar year.

Honey Trading Post: This is a free service to members wishing to buy or sell honey on a wholesale basis. Just email or call the editor with contact information and whether you are buying or selling. Pricing is between the interested parties.